



[www.euroform.co.uk](http://www.euroform.co.uk)

# VERSAREND®

Direct Render Base Board



# VERSAREND

## direct render base board

Versarend® is an A1 non-combustible exterior grade direct render base board with mesh reinforcing facings. It is one the first boards of its kind to combine the benefits of Ordinary Portland Cement into a light weight 'score & snap' building board that is quick to install.



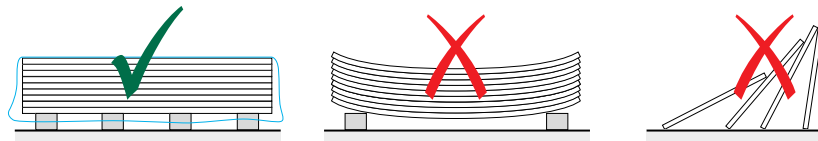
- Versarend® can be readily fixed with recommended screws and easily cut with a utility knife.
- Versarend® is conformity assessed according to BS EN 12467:2012+A2:2018 "Fibre-cement flat sheets"
- Versarend® is manufactured with a unique process combining Ordinary Portland Cement, and a reinforcing matrix that enhances the workability and handling properties over traditional fibre cement boards
- It is manufactured in 12.5mm thickness and has a taper on the two long edges of the outer face

## VERSAREND Technical information

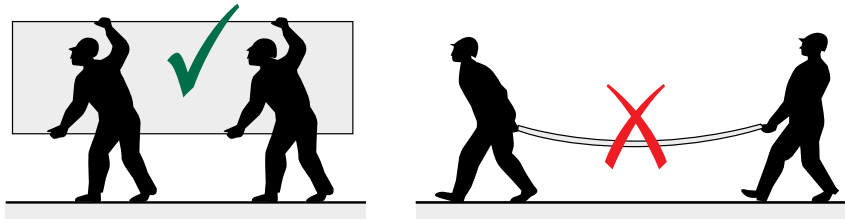
Parameter	Value	Tolerance
Reaction to fire (BS EN 13501-1)	A1 (Non-combustible)	N/A
Durability & Strength (BS EN 12467)	Category B, Class 1	N/A
Thickness (mm)	12.5	+/- 10 %
Width (mm)	1200	+/- 0.3 %
Length (mm)	2400	+/- 5 mm
Straightness of Edges (%)	≤ 0.1	N/A
Squareness of Edges (mm/m)	≤ 4	N/A
Dimensional stability (R.H. 30% to 80% @ 20°C)	< 0.1%	+/-
Average Wet Bending Strength (Mpa)	≥ 4	N/A
Apparent Density (kg/m <sup>3</sup> )	900	Minimum
Weight per sheet (ex-production kg)	39.6	+/- 10 %
Saturated Density (kg/m <sup>3</sup> )	1225	+/- 10 %
Thermal conductivity (K-value)	0.22 W/mK	N/A
Moisture Content (%)	10	+/- 2.5

## VERSAREND Delivery and storage

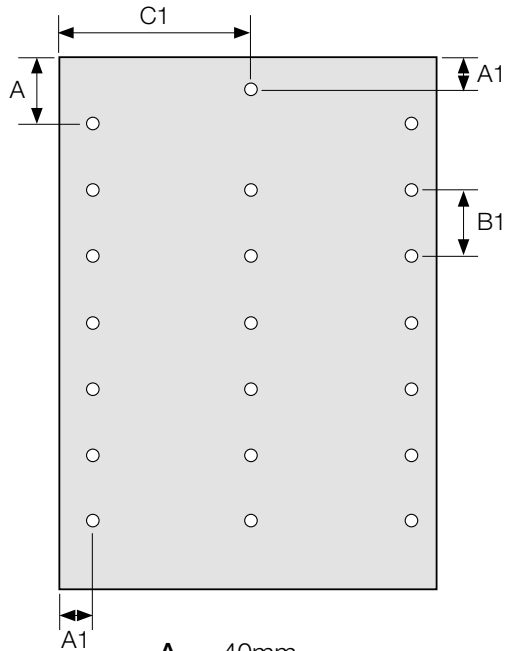
- Boards should be received in a dry state with pallets protected from weather with plastic sheeting or similar.
- Boards should be stored on flat, dry pallets elevated on skids/battens sufficiently from ground level to prevent board wetting.
- If boards are stored on site for a long period of time they should be kept under cover/ indoors if possible.



- When manually moving boards they should be carried in a vertical orientation.



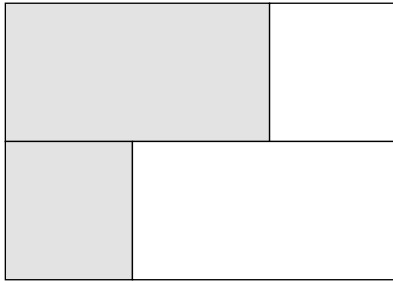
## VERSAREND Installation



**A** = 40mm  
**A1** = 15mm  
**B1** = ≤250 mm  
**C1** = 600mm

Install with stainless steel countersunk head screws adapted to substrate. Minimum - length 36mm and diameter 3.5mm.

## VERSAREND Installation (cont.)



### NOTE:

- 4 way joints are not recommended
- Minimum board width should not be less than 600mm
- Versarend® can be installed in either 'portrait' or 'landscape' orientation.
- Versarend® should be kept dry prior to render system application
- A ventilated cavity of minimum 50mm is required to the rear of the board assembly
- See installation detailing at specific zones later in guide

### PROVISION FOR EXPANSION

Within a single frame assembly up to 6000mm x 6000mm maximum, gaps between boards should be 3-4mm.

Any expansion joint fillers used must be acceptable for the render manufacturer's system and must be compatible with cementitious boards.

### BATTEN TYPE

Timber battens should be selected as suitable for exterior use and be suitable for the mounting of buildings boards. Minimum dimensions 50mm x 50mm

### COMPATIBILITY OF RENDER FINISHES

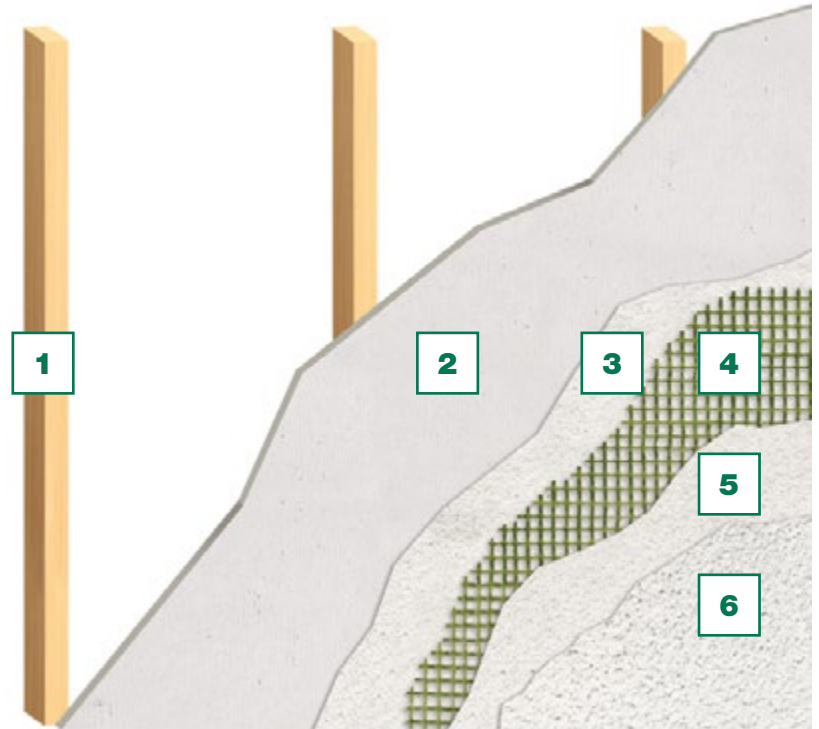
In all instances Euroform strongly recommends that the manufacturer of the proposed render system is consulted to check for compatibility and any specific product application details. Euroform should be contacted in the event of any queries arising.

## VERSAREND Installation (cont.)

### TYPICAL RENDER SYSTEM COMPOSITION

Ventilated timber construction - render only

- 1** Suitably treated Timber Stud
- 2** Versarend®
- 3** Render Base Coat
- 4** Reinforcing Mesh
- 5** External Base Coat
- 6** Final Render



## VERSAREND Cutting

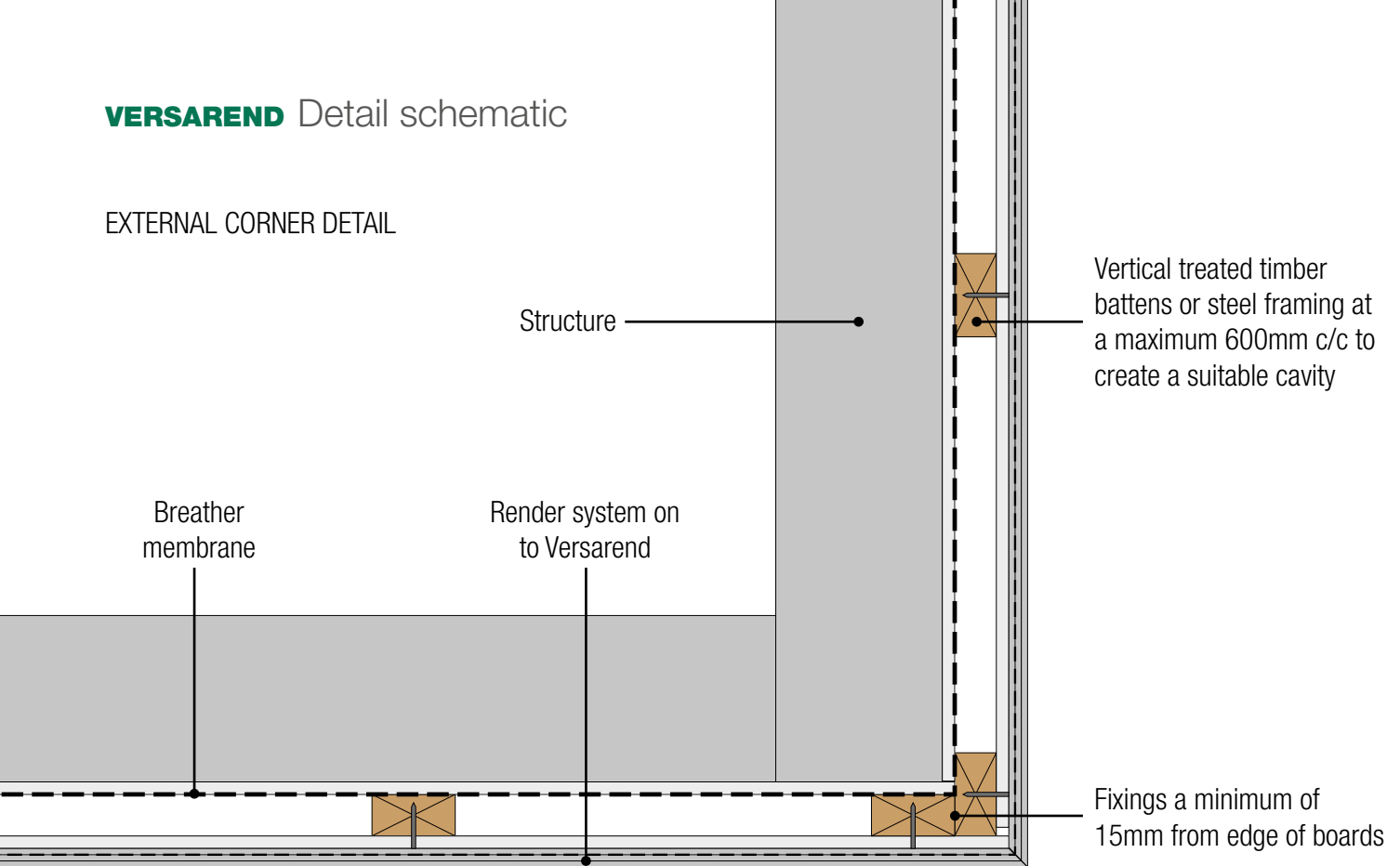
Versarend® can be easily score and snapped with a traditional utility knife. Use a straight edge and make initial cut to the face of the board. Apply pressure to cut piece to open the joint up and then run the knife back along the scored line to cut the mesh to the reverse side of the panel to complete cut.





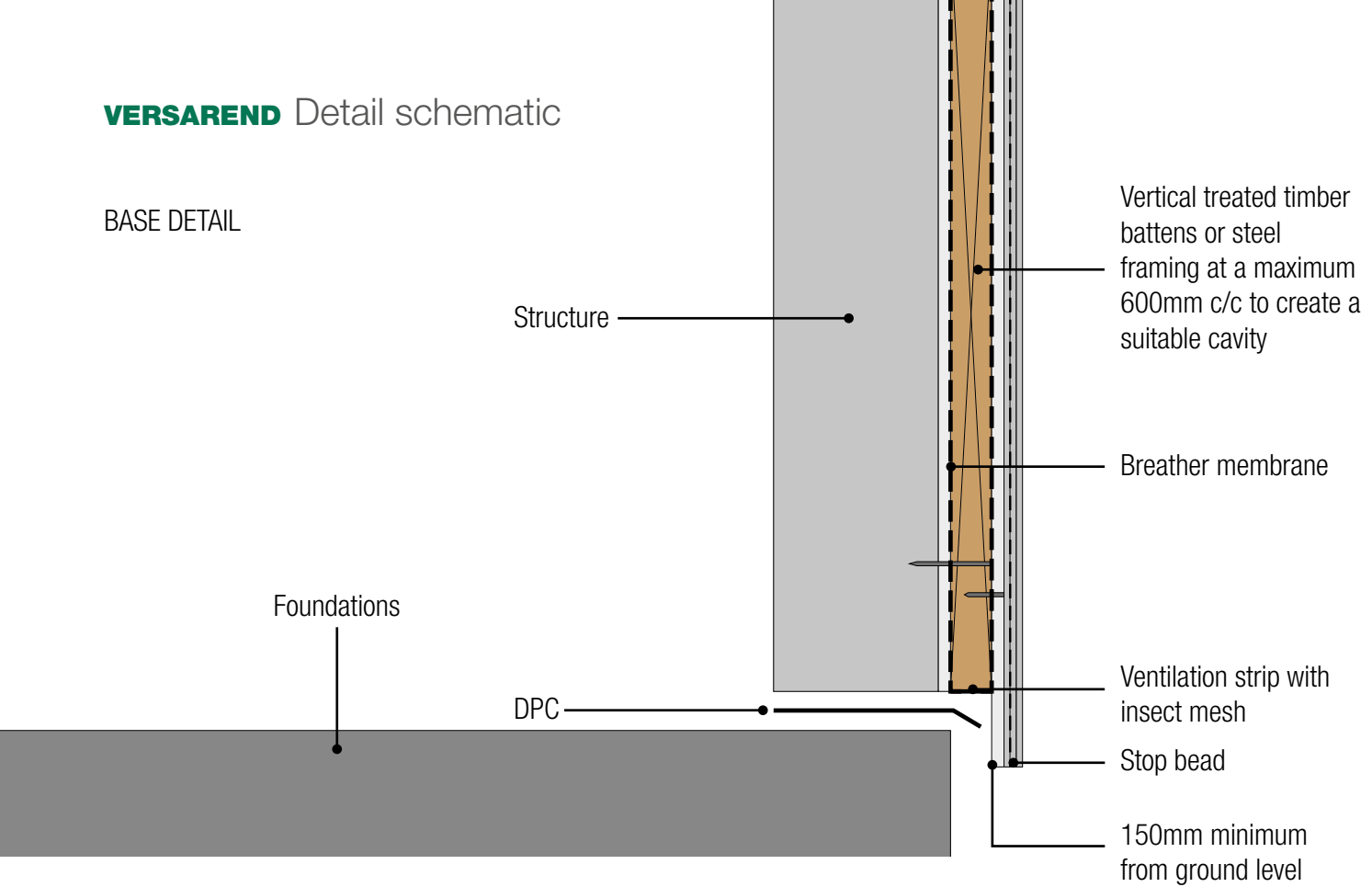
# VERSAREND Detail schematic

## EXTERNAL CORNER DETAIL



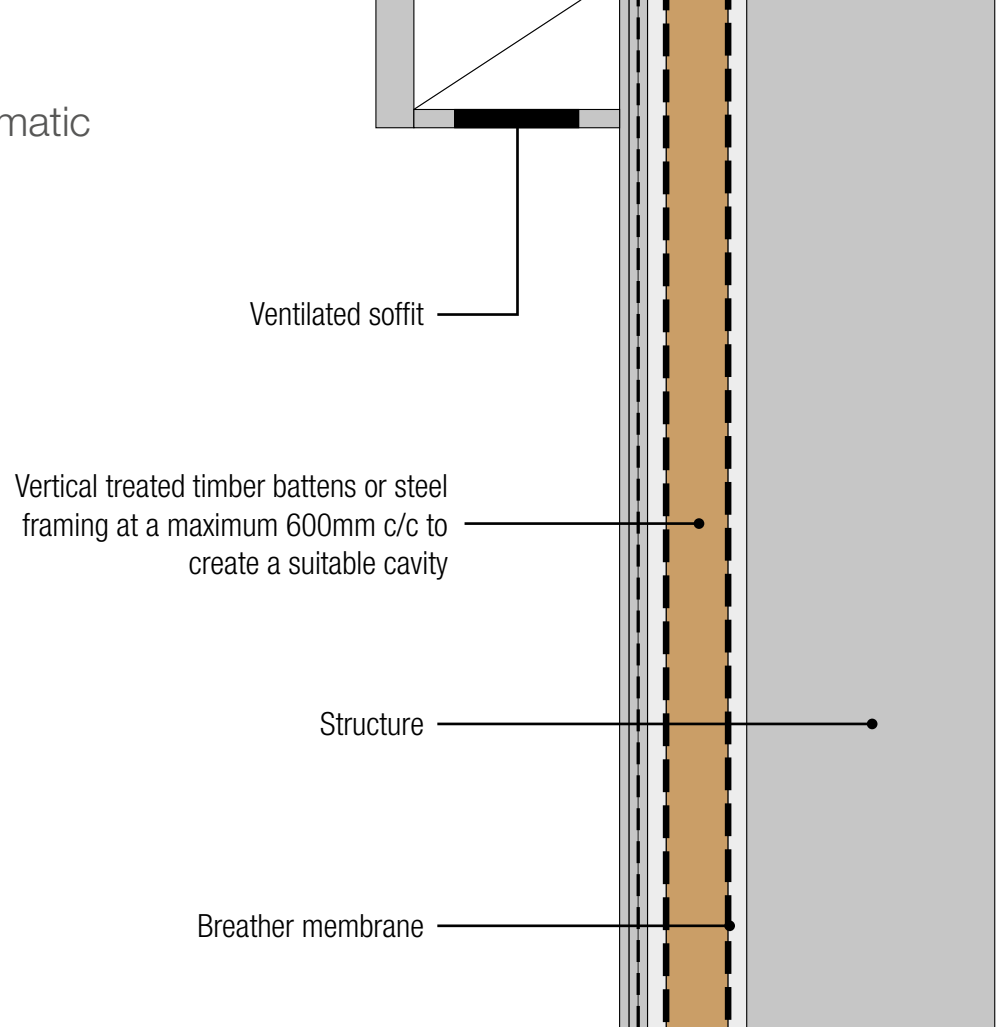
# VERSAREND Detail schematic

## BASE DETAIL



## VERSAREND Detail schematic

### HEAD DETAIL





T 01925 860999  
E info@euroform.co.uk  
W www.euroform.co.uk

Euroform is part of



www.PerformanceTechnologyGroup.com