

## Installation Guidelines

Euroform Surebreathe® breather membrane system has been developed to satisfy EuroClass A1 in accordance with EN 13501-1. Surebreathe® is water resistant to Class W2 in accordance with EN 13859-2 and is UV resistant for up to 3 months. Easy to cut and install Surebreathe® is specifically approved for use with Euroform cement based sheathing boards. Surebreathe® can be installed in a variety of methods.



Breather Membrane and associated tape

Membrane	1.5 x 50m roll on cardboard core (75m <sup>2</sup> )
Joint Tape	75mm x 25m roll on cardboard core
Double Sided Tape	50mm x 50m roll on cardboard core

## TECHNICAL INFORMATION

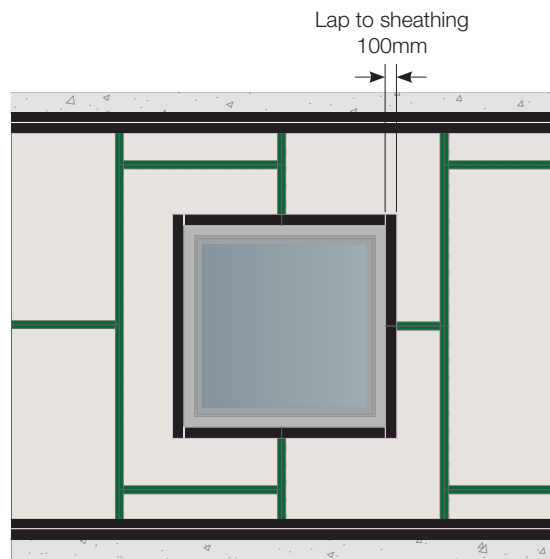
Grammage	EN 1849-2	Nominal 210 g/m <sup>2</sup>
Thickness	EN 1849-2	Nominal 0.18mm
Fire classification	EN 13501-1	Class A1, mechanically fixed direct to any substrate with a minimum fire classification of A2-s1, d0, a minimum thickness ≥ 9mm and a density ≥ 525kg/m <sup>3</sup> . Including horizontal and vertical overlaps sealed with Surebreathe® tape. Class A2-s1, d0, mechanically fixed direct to any insulation with a minimum fire classification of A2-s1, d0, a minimum thickness ≥ 20mm and a density ≥ 37.5kg/m <sup>3</sup> . Including horizontal and vertical overlaps sealed with Surebreathe® tape.
Resistance to water penetration	EN 13111	Class W2
Tear resistance	EN 12310-1	Longitudinal: > 250 N Transverse: > 320 N
Water vapour resistance	EN 12572	< 0.60 MNs/g
Water vapour transmission	EN 12572	Sd < 0.12m
Air permeability	EN 12114	27m <sup>3</sup> / m <sup>2</sup> .h@50Pa
UV resistance	EN 1269/97	3 months prior to cladding
Application temperature	-	+5°C to +30°C
Tensile strength	EN 12311-1	Longitudinal: > 1,500 N/50mm Transverse: > 1,000 N/50mm > 75% (after ageing)
Elongation	EN 12311-1	Longitudinal: < 6% Transverse: < 5%
Service temperature	-	-36°C to +150°C
Storage	-	Store in shaded dry condition between +10°C and 25°C away from direct exposure to weather. Avoid stacking pallets.
Shelf life	-	24 months when stored as recommended in original unopened packaging.
Material	-	Glass fibre fabric

Supplied in rolls of 1.5 x 50m (75m<sup>2</sup>) Surebreathe® is easily installed and jointed with Surebreathe® joint tapes or mechanical fixings.

The installation option selected will depend on project and site-specific requirements such as anticipated wind loads, length of exposure prior to the installation of the holding brackets for the cladding/finish, building height and location.

## Before installing Surebreathe®

The junctions between the sheathing boards and floor slabs or columns shall be sealed, overlapping both the structure and sheathing board by a minimum 100mm.

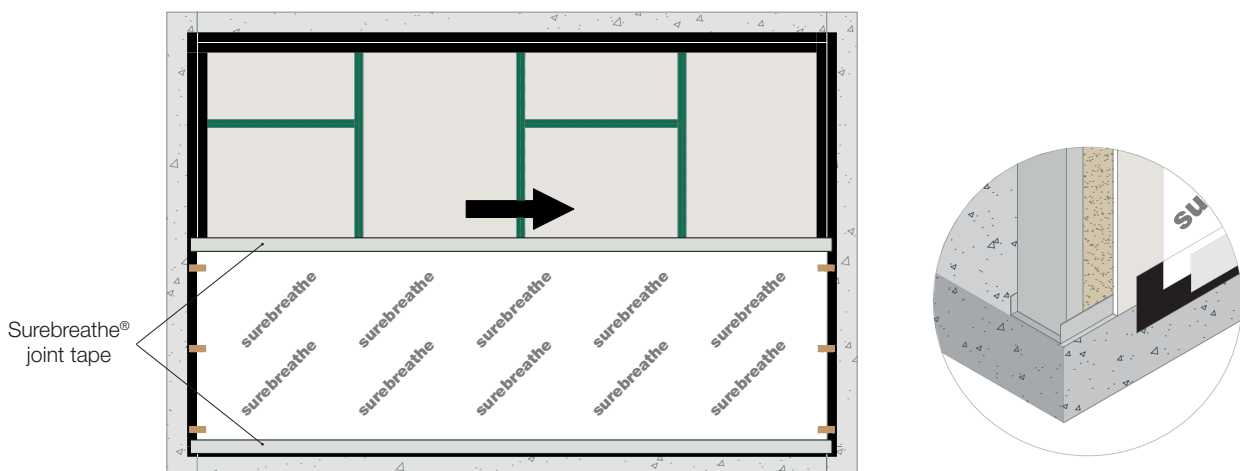


All windows, doors and other openings should be fully sealed with suitable products (see detail at base of document). Any loose or obvious dust or debris must be cleaned from the surface of application. Euroform recommends the use of Tremco CPG products to be used in conjunction with Euroform cement based sheathing boards and Surebreathe®.

## Installation OPTION A

For moderate wind loads or where the cladding bracket will be installed soon after application of Surebreathe®.

Beginning at the lowest part of the facade, stand the roll upright and align the lower loose corner on the midpoint of the overlapping window & door sealing membrane used to seal the foot of the sheathing board. The membrane must overlap the perimeter sealing membrane by a minimum of 100 mm. Use a temporary low tack masking tape (or similar) to secure Surebreathe® to the substrate.

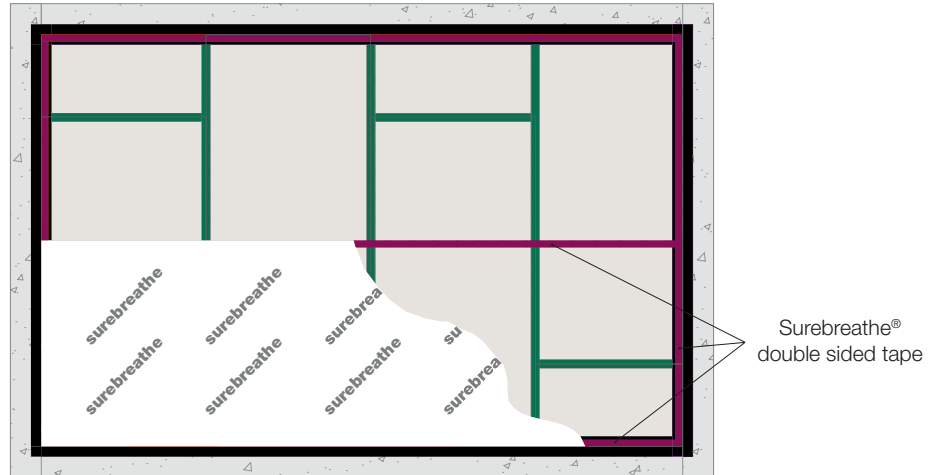


Apply Surebreathe® horizontally until reaching the end of a bay or an opening, applying more sections of masking tape at intervals of not less than 450 mm and not more than 1000 mm to temporarily secure Surebreathe®. Remove the temporary low tack tape and apply Surebreathe® tape to the top and bottom edges of the membrane forming a 50/50 lap between the membranes edge and the substrate, ensuring it is smooth and free from any wrinkling or bubbling, and consolidate the bond with a stout seam roller.

## Installation OPTION B

Suitable for low, moderate, or high wind loads with Surebreath<sup>®</sup> Double Sided tape where mechanical fasteners are not specified.

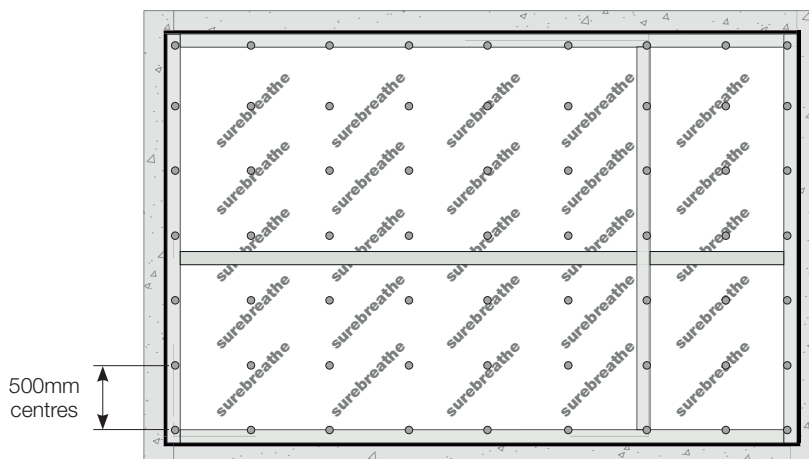
Surebreath<sup>®</sup> DOUBLE SIDED tape should be used around the entire perimeter of Surebreath<sup>®</sup>. For higher wind loads, the bond can be further enhanced by installing additional vertical strips of Surebreath<sup>®</sup> DOUBLE SIDED tape at 500 mm centres. Surebreath<sup>®</sup> DOUBLE SIDED tape is pre-applied to the cement board to provide support during installation. Begin by removing the backing liner and fix the Surebreath<sup>®</sup> DOUBLE SIDED tape to the sheathing board, press down firmly to create an instant bond. The top peel off can then be removed and Surebreath<sup>®</sup> applied. Start with the bottom left corner and install Surebreath<sup>®</sup> horizontally ensuring the membrane is plumb and wrinkle free, carefully pressing the membrane on to the tape to bond into position.



## Installation OPTION C

Suitable for high wind loads using mechanical fasteners.

Stainless steel screws are installed through the cement based sheathing board into the SFS at 500 mm centres vertically and to align with every stud. The screws should be a suitable drill-tip or self-tapping and the screw head must sit flush with the surface (not countersunk). An EPDM /Butyl washer must be used between the screw head and membrane to avoid water ingress. Sealing the screw heads with tape is not necessary with the use of suitable washers.

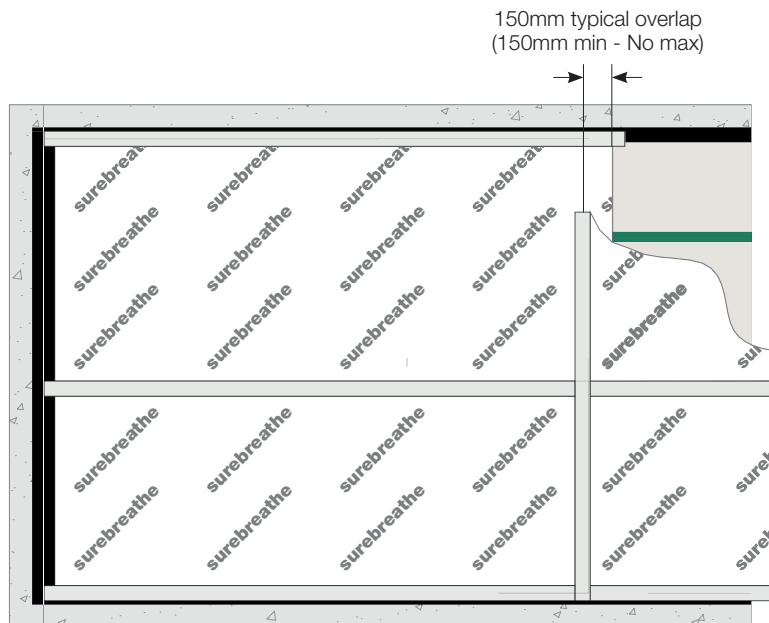


## Overlapping of joints

Horizontal joints in Surebreathe® should be overlapped by 100mm and taped on a 50/50 ratio to each layer.

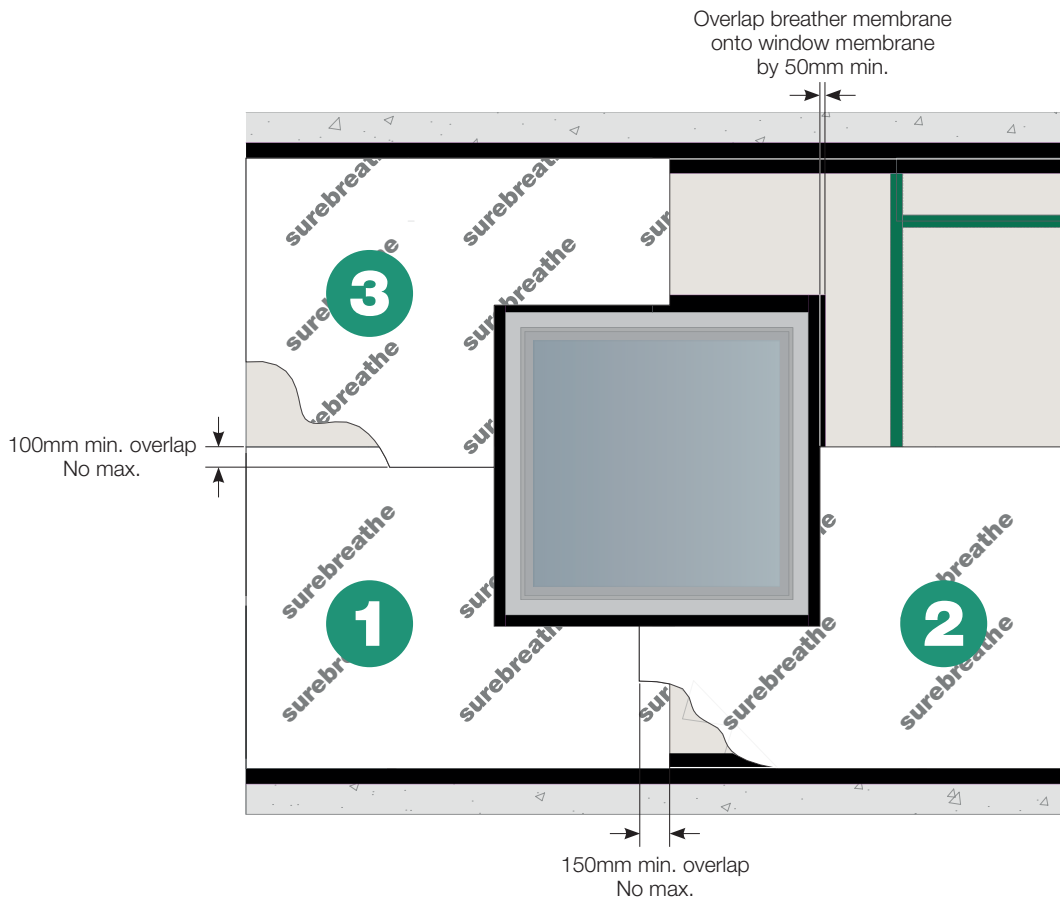


Surebreathe® should be overlapped by 150mm at all vertical joints and taped on a 50/50 split between layers.



## Openings such as window and doors

Windows, doors, or openings must be sealed before installation of Surebreathe® commences. Surebreathe® should overlap the waterproofing system by a minimum of 50 mm. A seam roller (or similar) should be used to ensure that tapes are applied without any bubbling and with correct level of adhesion. Euroform recommends Tremco CPG products for use with Surebreathe® and cement-based boards.



Cladding brackets / penetrations in general must be sealed around once Surebreathe® has been installed.

Surebreathe® is a registered trademark UK00004248822 of SIG Trading Ltd